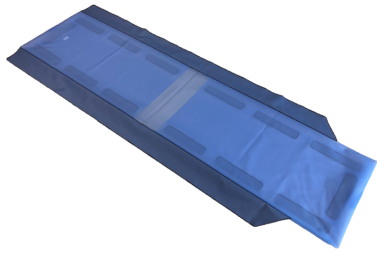


## Product Data Sheet



### CT Table Cover

Ref.:	Product name:	Dimensions:	Weight:	Packaging dimensions:
1164-B	CT Table Cover 2090	2090 x 720 x 20 mm	1420 g	750 x 450 x 60mm
1165-B	CT Table Cover 1790	1790 x 720 x 20 mm	1240 g	750 x 450 x 60mm
1166-B	CT Table Cover 2360	2360 x 720 x 20 mm	1600 g	750 x 450 x 60mm
1167-B	CT Table Cover 1860	1860 x 720 x 20 mm	1240 g	750 x 450 x 60mm
1168-B	CT Table Cover 2070	2070 x 720 x 20 mm	1420 g	750 x 450 x 60mm
1169-B	CT Table Cover 400	400 x 720 x 20 mm	450 g	750 x 450 x 60mm
1175-A	CT Table Cover 310	310 x 720 x 20 mm	420 g	750 x 450 x 60mm
1177-A	CT Table Cover 2190 S	2190 x 940 x 20 mm	1690 g	750 x 450 x 60mm
1209-A	CT Table Cover 2400 S	2400 x 780 x 20 mm	2000 g	750 x 450 x 60mm
1210-A	CT Table Cover 350 S	350 x 710 x 20 mm	430 g	750 x 450 x 60mm
1211-A	CT Table Cover 2170 S46	2170 x 780 x 20 mm	1650 g	750 x 450 x 60mm
1212-A	CT Table Cover 2190 S46	2190 x 780 x 20 mm	1670 g	750 x 450 x 60mm
1223-A	CT Table Cover 2400 S46	2400 x 780 x 20 mm	2000 g	750 x 450 x 60mm
1183-A	CT Table Cover 2220 P	2220 x 785 x 20 mm	1690 g	750 x 450 x 60mm
1203-A	CT Table Cover 2320 P44	2320 x 760 x 20 mm	1890 g	750 x 450 x 60mm
1204-A	CT Table Cover 2100 P	2100 x 685 x 20 mm	1450 g	750 x 450 x 60mm
1184-A	CT Table Cover 2170 G	2170 x 760 x 20 mm	1650 g	750 x 450 x 60mm
1185-A	CT Table Cover 270 G	270 x 760 x 20 mm	400 g	750 x 450 x 60mm
1205-A	CT Table Cover 2720 G	2720 x 760 x 20 mm	2600 g	750 x 450 x 60mm
1206-A	CT Table Cover 2580 G	2580 x 760 x 20 mm	2400 g	750 x 450 x 60mm
1207-A	CT Table Cover 2100 G	2100 x 760 x 20 mm	1450 g	750 x 450 x 60mm
1208-A	CT Table Cover 370 G	370 x 760 x 20 mm	440 g	750 x 450 x 60mm
1221-A	CT Table Cover 2630 G	2630 x 420 x 20 mm	2500 g	750 x 450 x 60mm
1224-A	CT Table Cover 2450 P	2450 x 720 x 20 mm	2200 g	750 x 450 x 60mm
1239-A	CT Table Cover 2580 P44	2580 x 740 x 20 mm	2400 g	750 x 450 x 60mm
1244-A	CT Table Cover 2700 P44	2700 x 740 x 20 mm	2500g	750 x 450 x 60mm
1267-A	CT Table Cover 2050 G	2050 x 420 x 20 mm	1300 g	750 x 450 x 60mm
1280-A	CT Table Cover 170	170 x 480 x 10 mm	200 g	750 x 450 x 60mm
1281-A	CT Table Cover 200	200 x 480 x 10 mm	200 g	750 x 450 x 60mm
1290-A	CT Table Cover 2140 P	2170 x 550 x 20 mm	1500 g	750 x 450 x 60mm
1291-A	CT Table Cover 1985 SV	1985 x 430 x 20 mm	1500 g	750 x 450 x 60mm

<b>Intended use</b>	Short-term patient positioning and stabilization device during invasive and non-invasive procedures to be used on intact patient's skin. Non-Sterile and not to be used in the sterile field.	
<b>Directives &amp; classification</b>	CE according to MDR – Regulation 2017/745 Class 1 product	
<b>Applied quality assurance</b>	SN EN ISO 13485:2016	
<b>Instructions for use</b>	Enclosed to the product	
<b>Restrictions of use</b>	Do not use the product for purposes other than those described.	
<b>General safety notes</b>	Non sterile. Do not sterilize. Caution: Federal law restricts this device to sale by or on the order of a licensed health-care professional (Rx only).	
<b>Materials</b>	<b>Material</b> TPU TPU/ Nylon PA LDPE Cardboard	<b>Component</b> foils textile foil hook and loop fastener packaging packaging
<b>Marking</b>	CE	
<b>Storage</b>	Store in dry place / room temperature	

Figures are subject to usual tolerances. All information to the best of our current knowledge. They do not guarantee a warranted quality and are no foundation for a contractual relationship. Errors excepted.